

# WOODS **GROUNDBREAKER-X™**

7- & 8-FOOT COMPACT BACKHOES

**2 Year  
Warranty!**

**NEW!**

### PERFORMANCE GUIDE

Ideal for hard-to-reach commercial or residential digging and clean up.

## BH70-X & BH80-X GROUNDBREAKER-X™ BACKHOES

*For compact tractors 18-45 hp*

Ten years ago Woods introduced a series of innovative new backhoes that were more powerful, and more reliable than anything on the market. Today, we celebrate a decade of proven performance by introducing the next generation of Groundbreaker backhoes, the Groundbreaker-X™.

The X means extra everything. Styled after the design used in

construction equipment, Woods now brings the advantages of an excavator style curved boom to homeowners and commercial contractors. Our heavy-duty, construction grade Gannon® buckets have greater capacity and durability than anything else around. And, you can add a mechanical thumb to both models for maximum productivity.



### Extra Productivity

Six adjustable positions on the optional mechanical thumb allow you to easily pick up a range of materials from large tree limbs to concrete chunks.



### Extra Ability

Excavator style curved boom reaches over objects with better visibility and less repositioning than a straight boom.



### Extra Power

The unique boom design, plus large boom and dipper cylinders combine to offer significantly higher digging forces than competitive models.



Over for more extras!

**WOODS**  
Tested. Proven. Unbeatable.™

# WOODS GROUNDBREAKER-X™ BACKHOE

## Specifications

Model	BH70-X	BH80-X
Tractor PTO horsepower	18-40 hp	20-45 hp
Digging depth - 2' flat	84.5"	96.5"
Digging depth - 8' flat	61.25"	75.75"
Reach from swing pivot	113.5"	125.5"
Loading height	66"	75.25"
Transport height	74.75"	82.25"
Swing arc	180°	180°
Bucket rotation	180°	180°
Stabilizer spread (up)	58.5"	58.5"
Stabilizer spread (down)	88.5"	88.5"
Relief pressure	2,030 psi	2,470 psi
Bucket digging force	3,110 lbs	3,780 lbs
Dipperstick digging force	2,000 lbs	2,480 lbs
2-cylinder swing	yes	yes
Swing speed control	-	yes
Bucket widths	9-24"	9-36"
Bolt-on vs. pin-on teeth	bolt-on	bolt-on
Thumb	optional	optional
Flip-over stabilizers	yes	yes
Stabilizer street pads	optional	optional
PTO pump kit	optional	optional
Clean-up (ditching) bucket	-	36"
Cemetery bucket	-	36"

### Additional Features

- Easy to transport due to high ground clearance
- Available in 13 different colors to match every major tractor brand
- Long-lasting, heavy-duty boom, dipper stick, and dual swing cylinders
- Easy to service hoses and end-grease pins
- Many 4-point mounts compatible with OEM belly mowers
- Welded to American Welding Society standards
- Tested in rigorous real-life conditions and in compliance with recommended industry safety standards
- Two-year warranty is one of the best in the industry – dare to compare!

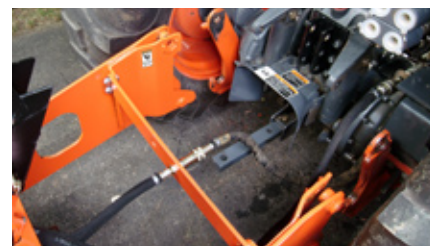
### Extra Smooth

The BH80-X offers adjustable swing speed control for smooth, controlled operation.



### Extra Simple

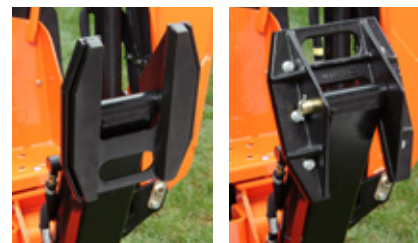
Choose a 4-point or 3-point hitch – both styles are simple to attach and detach.



### Extra Stability

Cast stabilizer pads provide extra firm footing. Pad flips over to bite into hard ground.

*Shown with optional street pads to help protect pavement, blacktop, bricks, and other surfaces.*



### Extra Comfort

Work in comfort with a low-profile control console, large walk-through operator's platform, and adjustable, high-back, cushioned seat.



### Extra Confidence

Quality products need quality care. So insist on WoodsCare™ genuine replacement parts for worry-free performance year after year.



**Woods**™  
GENUINE PARTS

**Woods Equipment Company** 2606 South Illinois Route 2, PO Box 1000, Oregon, Illinois 61061 tel 800-319-6637 [www.WoodsEquipment.com](http://www.WoodsEquipment.com)

Warning! Some images may show safety shields removed to provide a better view. Equipment should never be operated with any safety shield removed. Some machines in this brochure may be shown with optional equipment. Always operate machines in accordance with supplied operator's manuals. ©2005 Woods Equipment Company. All rights reserved. WOODS, the Woods logo, "Tested. Proven. Unbeatable!", Groundbreaker, and Groundbreaker-X are trademarks of Woods Equipment Company. All other trademarks, trade names, or service marks not owned by Woods Equipment Company that appear in this brochure are the property of their respective companies or mark holders. Specifications subject to change without notice. B-09052

**WOODS**  
Woods Equipment Company